

HOLCOMB & HOKE MFG. CO., INC.

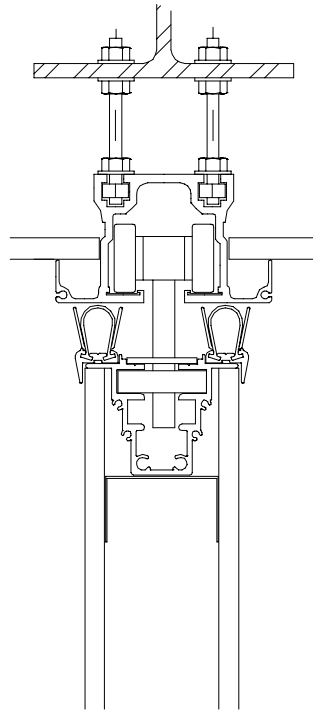
1545 Van Buren St. • Indianapolis, IN 46203-4192 • (317)784-2444 • Fax
(317)781-9164

www.foldoor.com

Installation Instructions

Track for Paired Panels

These instructions are intended to guide the installation process through a logical sequence of events. Knowing that each job condition usually requires a modification of the standard procedures, in the event of a variation that may compromise the structural integrity and operating performance, technical assistance is available from FoldDoor.



**Typical I Beam Mount Shown
Type 70 Track**

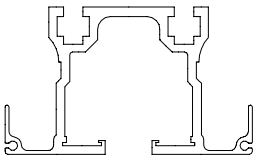
All successful trouble free installations require Track that is:

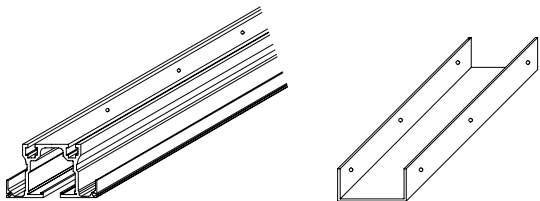
- Straight
- Level
- Free of sway
- Support adequate to support the partition

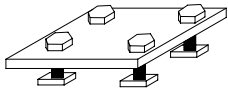
Before starting:

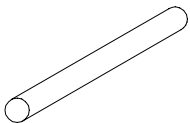
- Inventory parts
- Identify parts received
- Inspect for beam straightness - that 7/16" holes are in a straight line
- Hanger rod layout and beam punching match

Item	Part Number
------	-------------

Type 70 Track		60-071 10' 60-076 5'
---------------	---	-------------------------

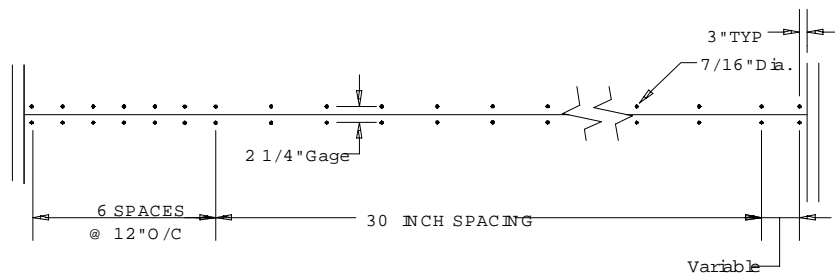
14" Aluminum 17" Channel Steel		71-205
-----------------------------------	---	--------

3/8"-16 Hex Flange Nut 3/8"-16 Square Nut 1"x 3/8"-16 Bolt		58-400 58-738 59-210
--	---	----------------------------

Splice Plate Assembly		71-800
-----------------------	---	--------

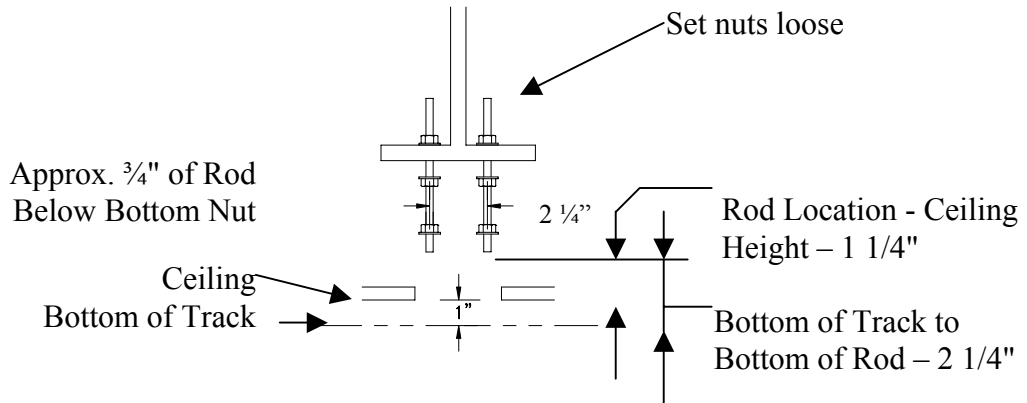
3/16" x 3 1/2" Steel Splice Pin 3/4" Wide Steel Track Runner Band 3/8"-16 All Thread Rod (if ordered)	52-735 50-134 Length Dependent
---	--------------------------------------

Generic Hanger Rod Layout

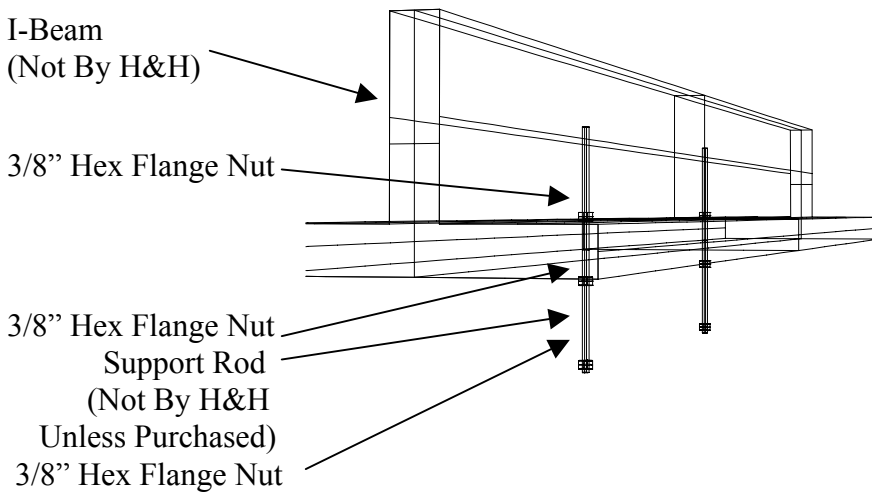


① **Set all Rods Loosely to Length**

- Desired ceiling height minus 1 1/4" (Using Std. 1" reveal)

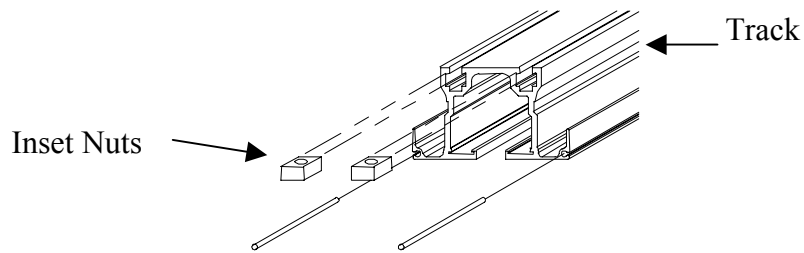


Items used in support assembly



② **Starting Track**

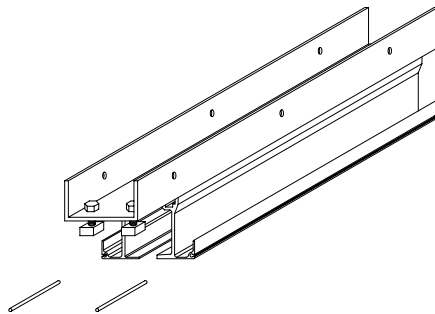
- Use 10' length of track
- Insert 3/8-16 square nuts in quantity to match rods
- Kinking the pin will give it a snug fit
- Rough set 1st 10' of track to height, end rods only



- Rough Set 1st 10' of track to height, tighten end rods only

③ Escapement

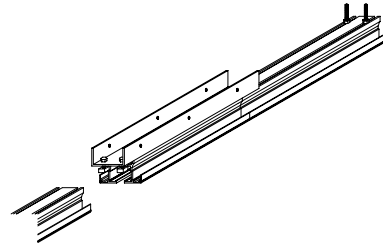
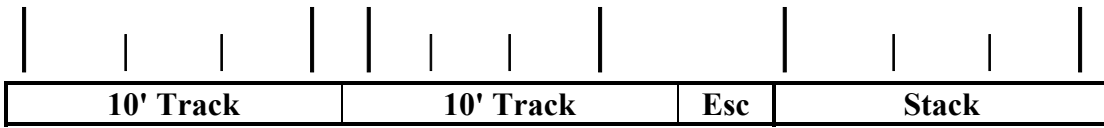
- Located after first 10' section of track



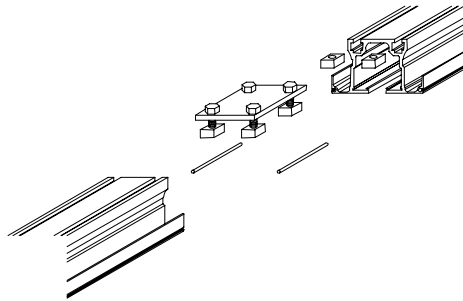
- Loosen end square nuts & slide onto secured stack track
- Fasten escapement onto track end
- Kink pins & slide in round pocket

④ 2nd piece of 10' track

- Again rough set track height, tighten only the end rods

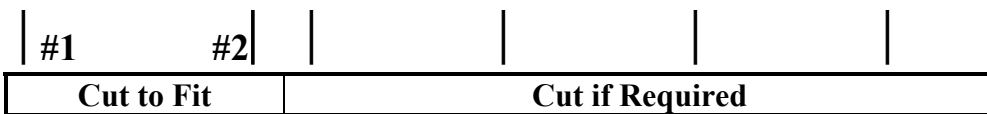


- All other 10' length of track, attach splice plate on to end of track and loosely fasten end rods
- Kink & slide in pins
- Align top of track & tighten bolts



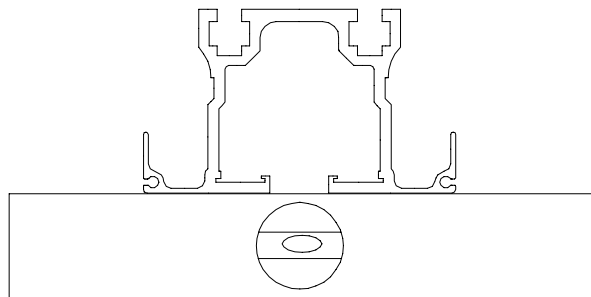
⑤ Last Piece of Track

- May require cutting the last & next to last piece of track
- Last piece of track to be supported by a minimum of two sets of rods



⑥ Leveling

- Tighten

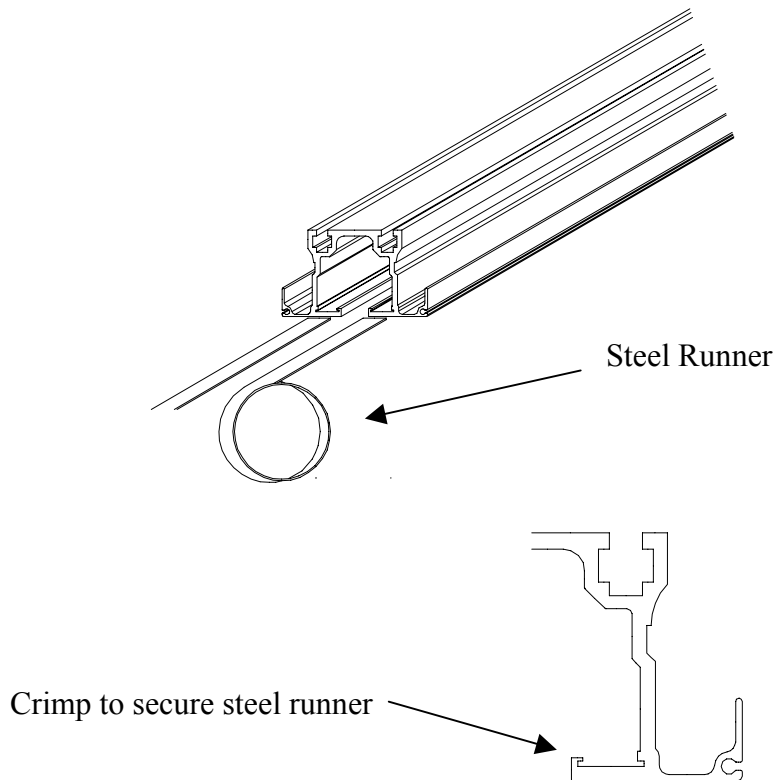


all

- remaining hanger rods
- Level track in *both* directions

⑦ Steel Runner

- Remove escapement & slide continuous steel track runner band into the track towards the opposite wall of the stack area
- Cut only at escapement joint
- Crimp track edge to secure the runner
- Should the job site be extremely dusty the runner could be inserted just prior to hanging the panels



⑧ Sway Bracing

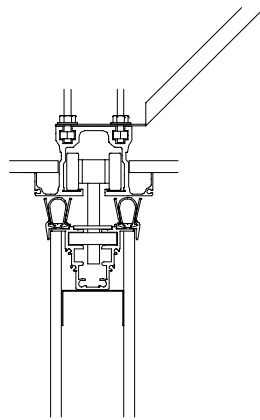
- When the length of the hanger rods exceed 12" sway bracing will be needed.

- Alternate from side to side

Length of Rods	Quantity of Braces per 10' of Track
12 to 18"	1
18 to 24"	2
24 to 30"	3
30 to 48"	4
	Double Quantity in Stack Area

Other Methods

- Wire
- Wood Blocking
- Steel Studs
- Enclosed Header



Shown Using Flattened Conduit

⑨ Field Dimensions

Check & Record:

1. Floor Levelness
 - Top of finished floor to bottom of track
 - Opening height at both walls
 - Every 4' along centerline
 - In Stack Area 2' on each side of Center Line
2. Plumbness of wall - if more than 1/4" variation please advise

⑩ Ceiling Location

- Typically bottom of track is 1" below ceiling

